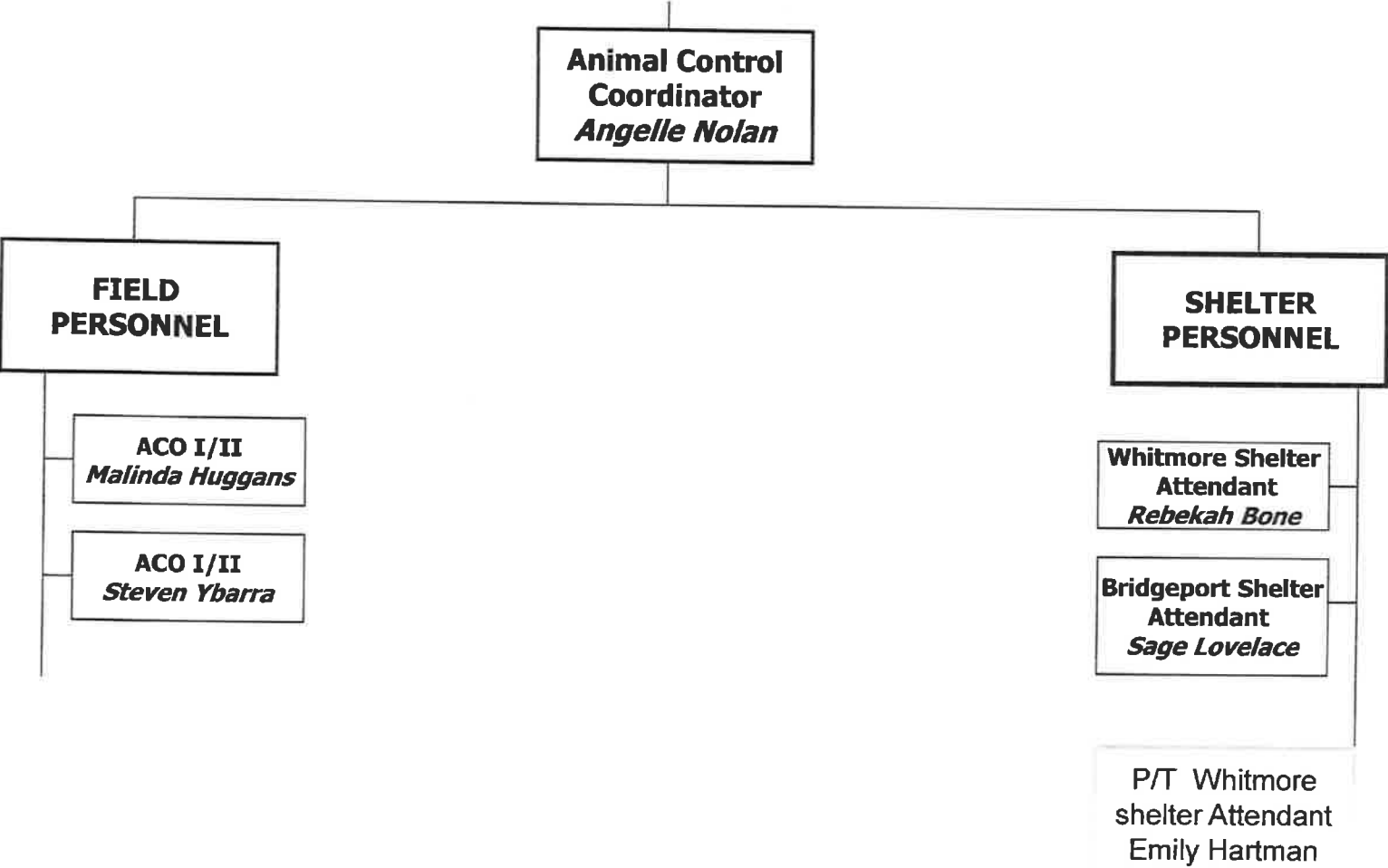


Mono County Animal Control



ANIMAL CONTROL

Core Services

		Mandated?	
1	ANIMAL LICENSING	Yearly licensing program	Y
		Monitor current and expired rabies vaccines	Y
		Yearly low cost vaccination and licensing clinics	Y

		Mandated?	
2	SHELTER MANAGEMENT	Feed and clean dogs and cats at our shelters	Y
		Maintain lost animal reports so folks can retrieve their lost animals	Y
		Be available for adoptions of shelter animals	Y
		Have available space for animals placed on quarantine and after hours impounds	Y

3	ANIMAL PATROL & TRAPPING	Respond to calls for service i.e.: barking dogs, nuisance	Y
		Respond to and handle dog bites on citizens	Y
		Quarantine animals involved in human bites	Y
		Loan and remove feral cats from peoples property	N

4	EUTHANIZATION	Euthanize the untreatable, and those with behavioral issues that put citizens at risk	Y
		We must make room for every stray, even if that means euthanizing an adoptable animal	Y

5	INVESTIGATION	Work with DA and Sheriff's dept to investigate and bring to court cruelty cases	Y
		Work with DA and Sheriff's Dept . To bring to court potentially vicious or vicious dogs to court	Y

Department Name	Division Name	Associated Goal	Tactic	Results	Internal or External	Target Completion (FY)
Animal Control	Animal Control	1A	Improve communication among staff members by having daily staff meetings in the morning and at the end of shift	Implement a roster from involving all personell to achieve maximum participation and response	Internal	No
Animal Control	Animal Control	2D	Patrol, personal and phone accessability to the public. Protect the public from strays and assist in neighborhood disputes involving companion animals	Discuss completion of and ongoing issues. Formulate a solid plan prior to duty. Discuss what could have been done better. Discuss things that went well and how we achieved this	External	Yes
Animal Control	Animal Control	4B	Plan patrol time more effieciently, Maintain our Facebook page for the public as well as county web site	Discuss most efficient route for patrol depending upon daily complaint logs. Maintian lists of adoptyable animals as well as strays	Both	Yes
Animal Control	Animal Control	4E	Reach out to other animal control agency's in the state	Exchange animals between facilities, Helps maintain relationships with other Animal Control Agencies. Finding homes for more animals, less euthanasia	Internal	No
Animal Control	Animal Control	5B	Daily discussions of the task at hand and any concerns	No Injuries, staff, feeling secure in duty.	Internal	No

Animal Control
DEPARTMENT 100-27-205

DEPARTMENTAL (or Division) OVERVIEW

Animal Control is a Public Health and Safety agency. Protecting the public and their animals and to enforce State and Local animal regulations

PROGRAMS AND SERVICES

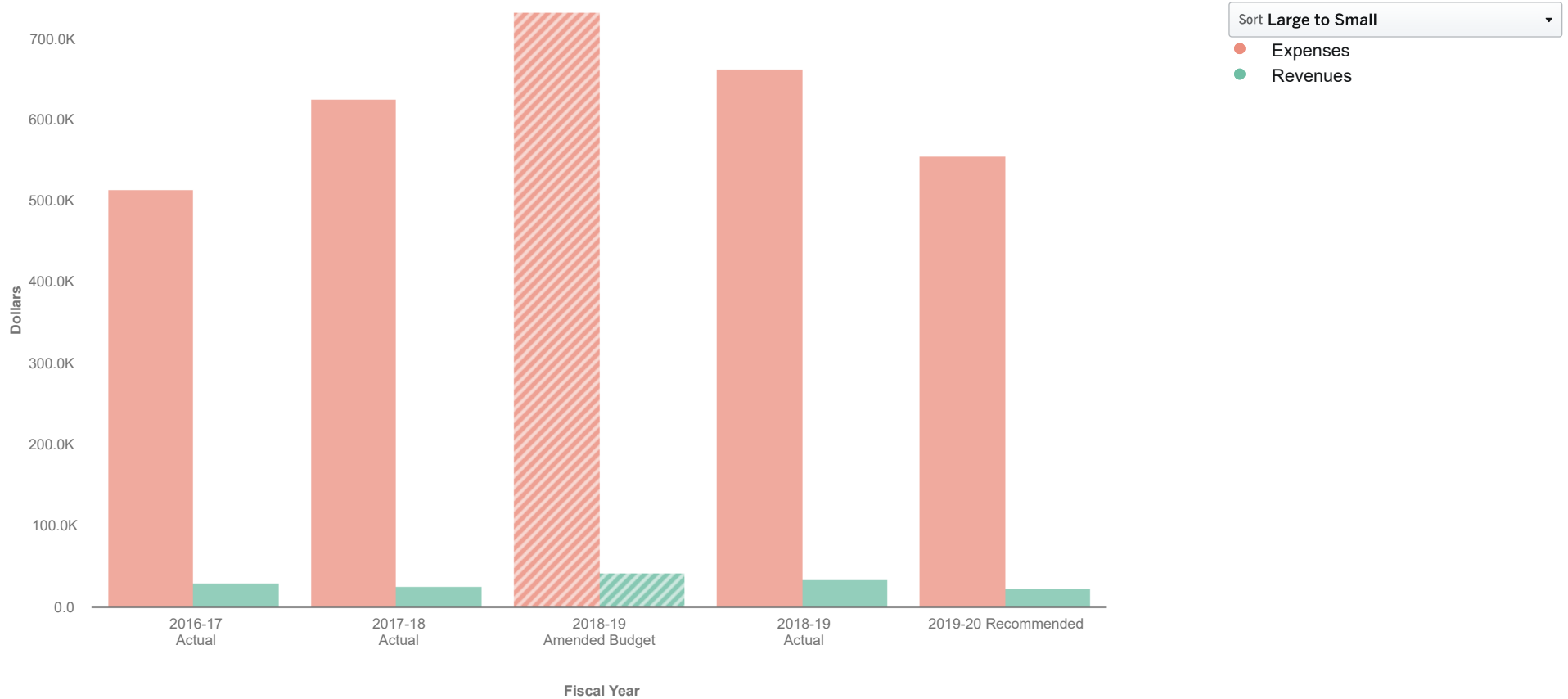
Some of our functions and programs are our state mandated programs, such as rabies control, a sheltering system to keep and find homes for adoptable strays and owner turn ins, rabies vaccination clinic and animal bite investigation with possible quarantining of animals. We are also responsible for picking up strays and owned dogs running loose. As well as enforcing county ordinances such as leash law and licensing requirements. We also trap feral cats and remove them from people's property. We also assist Eastern Sierra Wildlife in the shuttling of wounded wildlife. If we have an officer heading south we transport the wounded animal or bird to our south shelter and then they arrange a volunteer to pick up and drive the rest of the way to the facility.

We assist other departments. We provide community service and dispatch an officer to the scene of an arrest or death to take custody of the animals.

DESCRIBE WHAT IS NOT INCLUDED IN THIS BUDGET

Animal Control has nothing anticipated, that is not included in this budget

Animal Control 100-27-205



Expand All	2016-17 Actual	2017-18 Actual	2018-19 Amended Budget	2018-19 Actual	2019-20 Recommended
▼ Revenues	\$ 29,748	\$ 25,622	\$ 43,000	\$ 34,486	\$ 24,000
▶ Licenses, Permits & Franchises	16,411	15,470	20,000	24,555	16,000
▶ Charges for Services	10,630	9,182	8,000	8,613	8,000
▶ Miscellaneous Revenues	2,707	970	15,000	1,318	0
▼ Expenses	515,375	626,700	731,762	663,090	555,995
▶ Salaries & Benefits	331,314	392,382	441,119	390,222	400,629
▶ Services and Supplies	184,061	233,089	275,643	256,589	155,366
▶ Capital Outlay	0	1,229	15,000	16,279	0
Revenues Less Expenses	\$ -485,627	\$ -601,078	\$ -688,762	\$ -628,604	\$ -531,995