

**Mono County
Community Development Department**

PO Box 347
Mammoth Lakes CA, 93546
760.924.1800, fax 924.1801
commdev@mono.ca.gov

Planning Division

PO Box 8
Bridgeport, CA 93517
(760) 932-5420, fax 932-5431
www.monocounty.ca.gov

**PREAPPLICATION
REVIEW REQUEST**

DATE February 2, 2022

PROJECT NAME SCE Storage Area One - Temporary Materials Storage Yard

ANTICIPATED PERMIT OR APPLICATION:

- General Plan Amendment Specific Plan Conditional Use Permit Director Review
 Other _____

REPRESENTATIVE Debrah Bishop

ADDRESS 3040 Saturn Street, Ste 204 CITY/STATE/ZIP Brea, CA 92821

TELEPHONE (714) 420-5064 FAX (_____) _____

E-MAIL debrah@dedwardsinc.com ASSESSOR PARCEL # 037160025, 026, 027, 028

REVIEW REQUEST: A preapplication review by the Mono County Land Development Technical Advisory Committee (LDTAC) is requested for the following project. Briefly describe below the type of project, units, square footage, etc. Please attach expanded narrative if available.

SCE is requesting that the County allow for the continued use, through February 18, 2023, of the material storage yard located at 164 Industrial Circle. The proposed use will remain consistent with the current use. The impermeable parking area is inspected monthly by the SWPPP inspector, who is empowered to require repairs and make recommendations as they deem appropriate to ensure the efficacy of the BMP.

PLEASE PROVIDE: Maps, drawings, illustrations and narrative that may be useful for staff review.

SCE Mammoth Lakes Storage Area One

As part of SCE's wildfire mitigation plan, inspections in critical fire areas have been performed to identify necessary system repairs and upgrades. SCE's Mammoth Lakes Storage Area One at 164 Industrial Circle in Mammoth Lakes, will act as material storage and contractor show up yards for crews making the repairs and upgrades identified as part of the inspection process.

Storage Area One

Storage Area One is a cleared and mostly level area within an existing industrial park. Earthen berms border the north and east sides of the yard, an existing block wall to the west and a chain link fence to the south.




The yard will operate from 6 am to 6 pm, or from sunrise to sunset, depending on the time of year. Storage Area One will act as a material storage yard for poles, composite arms, frames, insulators and other materials required to complete upgrades and repairs of the existing electrical system. A mobile security guard will be onsite during non-working hours.

Portable restrooms, serviced by an authorized service provider at regular intervals, will be maintained on site. Trash receptacles and recycling bins will be maintained on site and serviced by an authorized service provider.

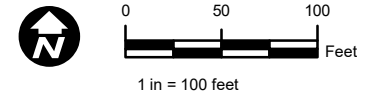
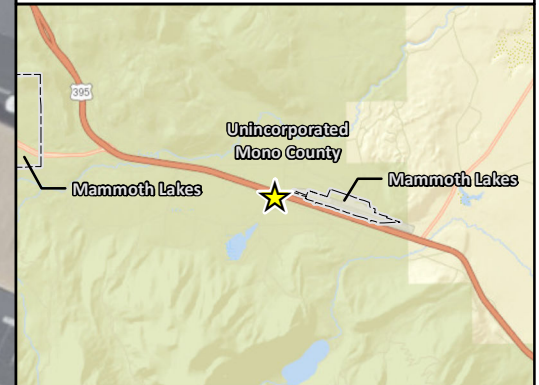
Dust control will be provided by water trucks on an as needed basis. Operation of the site will be consistent with surrounding uses and is not anticipated to generate potential nuisances.

The impermeable parking BMP will be inspected on a monthly basis by the Yard's Stormwater Pollution Prevention Plan (SWPPP) inspector to verify the integrity of the system and recommend repairs and changes as necessary.

Mammoth Lakes Storage Area One

-  Yard Boundary
-  Project Component
-  Containment Area

*Project component placement and dimensions are approximate.

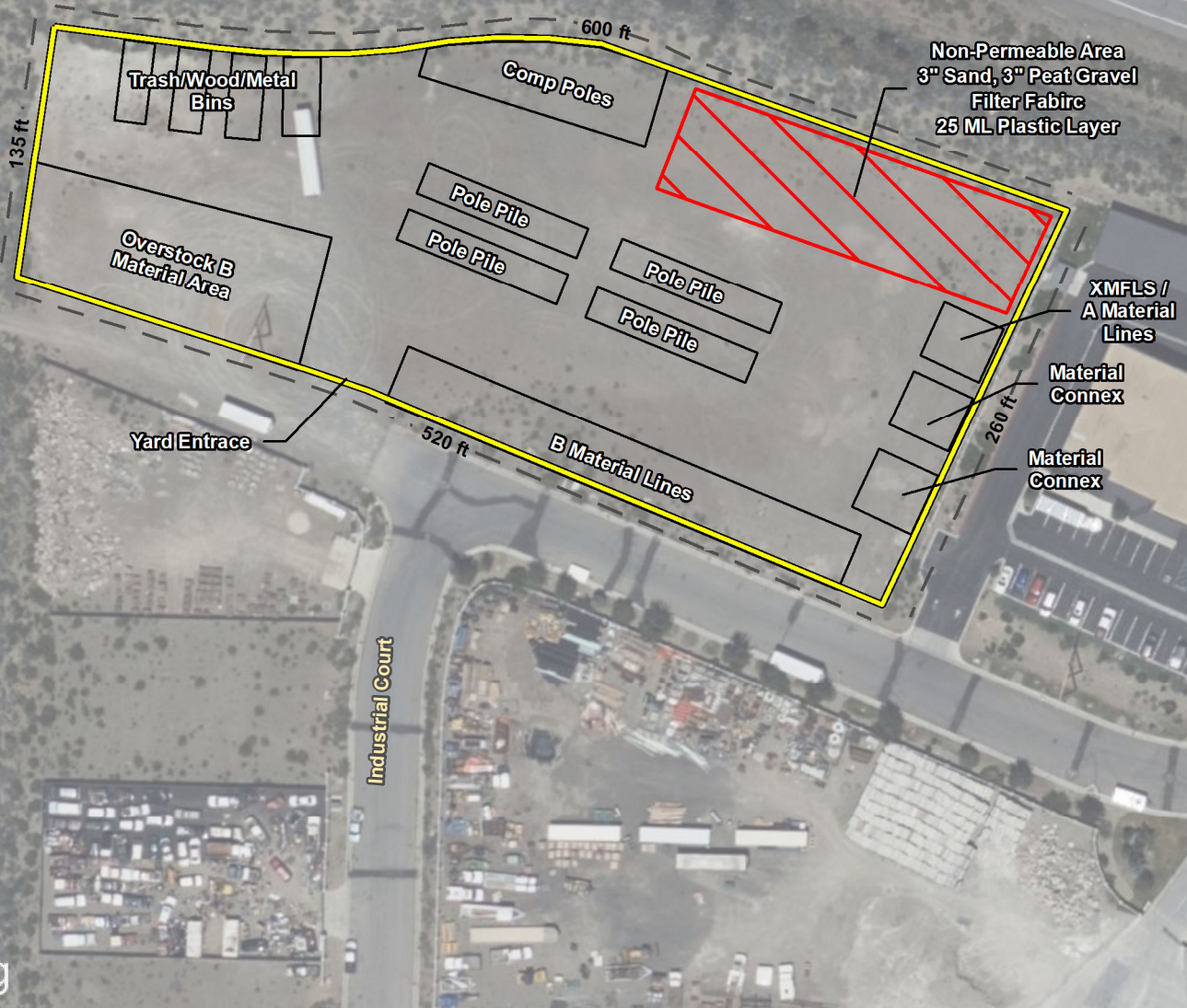
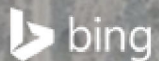


Create Date: 01/27/2022

Created By:
Rincon Consultants

Features depicted herein are planning level accuracy, and intended for informational purposes only. Distances and locations may be distorted at this scale. Always consult with the proper legal documents or agencies regarding such features. Cental Field Services

Service Layer Credits: Sources: Esri, HERE, Garmin, USGS, Intermap, INCREMENT P, NRCan, Esri Japan, METI, Esri China (Hong Kong), Esri Korea, Esri (Thailand), NGCC, (c) OpenStreetMap contributors, and the GIS User Community
© 2022 Microsoft Corporation © 2022 Maxar © CNES (2022) Distribution Airbus DS



395

Industrial Court

Path: C:\GIS\Projects\alpath\20-095559\Projects\21-1170 SCE ESD Staging Yard Eav\Reviews\Mammoth Lakes Storage Area One.mxd