

Long Valley Hydrologic Advisory Committee Hydrologic Monitoring Data



Unpublished and provisional U.S. Geological Survey Data
through mid-July 2018 - Submitted by J.F. Howle
Prepared July 25, 2018

LIST OF DATA

GROUND-WATER LEVELS

Hydrographs of Daily Water Level values

Wells 14A-25_01 (Deep) and _02 (Shallow) from Jan 2016 through mid-July 2018.
Wells 28A-25_01 (Deep) and _02 (Shallow) from Jan 2016 through mid-July 2018.
Well BLM-1_01 (Deep) and _02 (Shallow) from mid-May 2018 through mid-July 2018.
Well 28-25 from mid-May 2018 through mid-July 2018.

Well CH-10B 1985 through mid-July 2018.
Well LV-19 from late 2009 through mid-July 2018.
Wells SC1 and SC2 from September 2014 through mid-July 2018.
Wells SC1 and SC2 from December 2005 through mid-July 2018.

QUARTERLY GROUND-WATER TEMPERATURE PROFILES

Well 14A-25_01 (Deep) Aug 2017, Nov 2017, Jan 2018 and May 2018.
Well 28A-25_01 (Deep) May 2017, Nov 2017, Jan 2018 and May 2018.
Well BLM-1_01 (Deep) Jan 2018 and May 2018.
Well 28-25 Jan 2018 and May 2018.

FISH HATCHERY DATA

Computed Daily Values for sites FHAB, FHCD, FH23

Discharge – 1988 through mid-July 2018.
Water temperature – 1988 through mid-July 2018.

Calculated Values through January 2018

Thermal water discharge estimate – AB and CD
Thermal water as percent – AB and CD
Total and thermal water discharge – AB and CD combined

HOT CREEK DATA

Hot Creek Flume - daily mean discharge 1983 through mid-July 2018.
Graph of estimated thermal water discharge 1988 through January 2018.

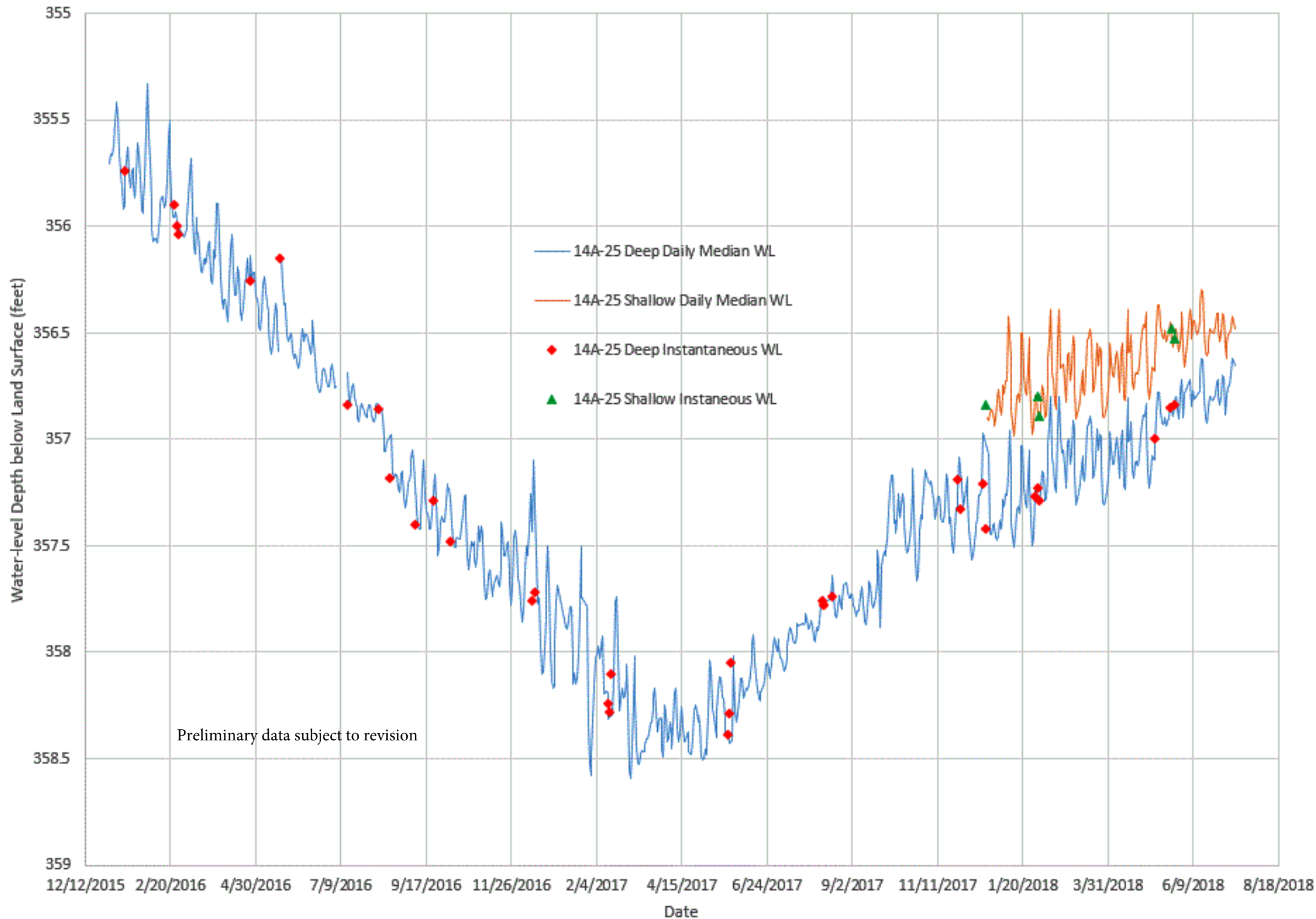
PRECIPITATION

2017 Mammoth Ranger Station data was mostly incomplete.

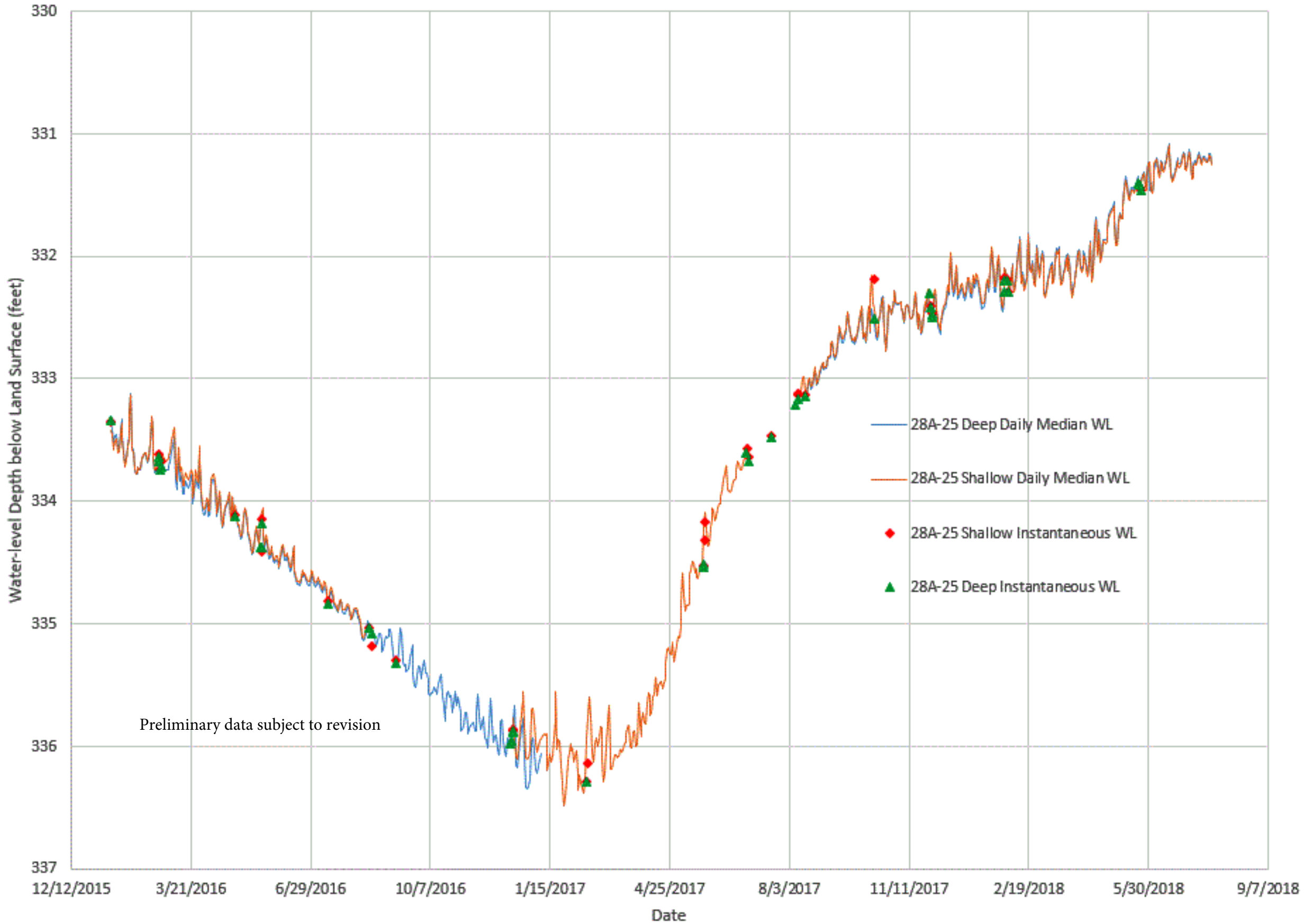
Table of USGS Site IDs

Cover Image: Mono Lake – photo by Kevin Bazar

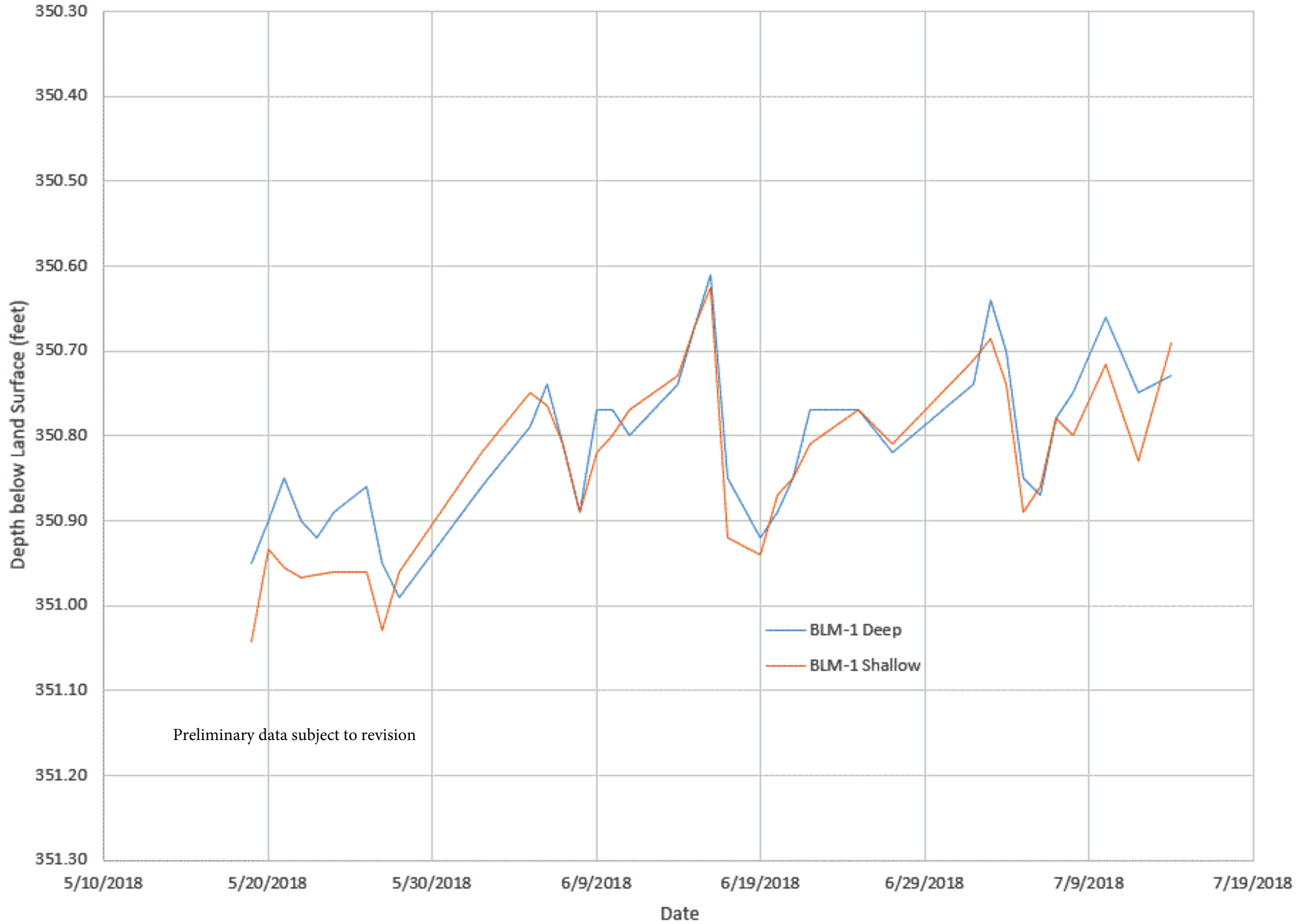
Well 14A-25 - Daily Median and Instantaneous Water-level Depth below Land Surface



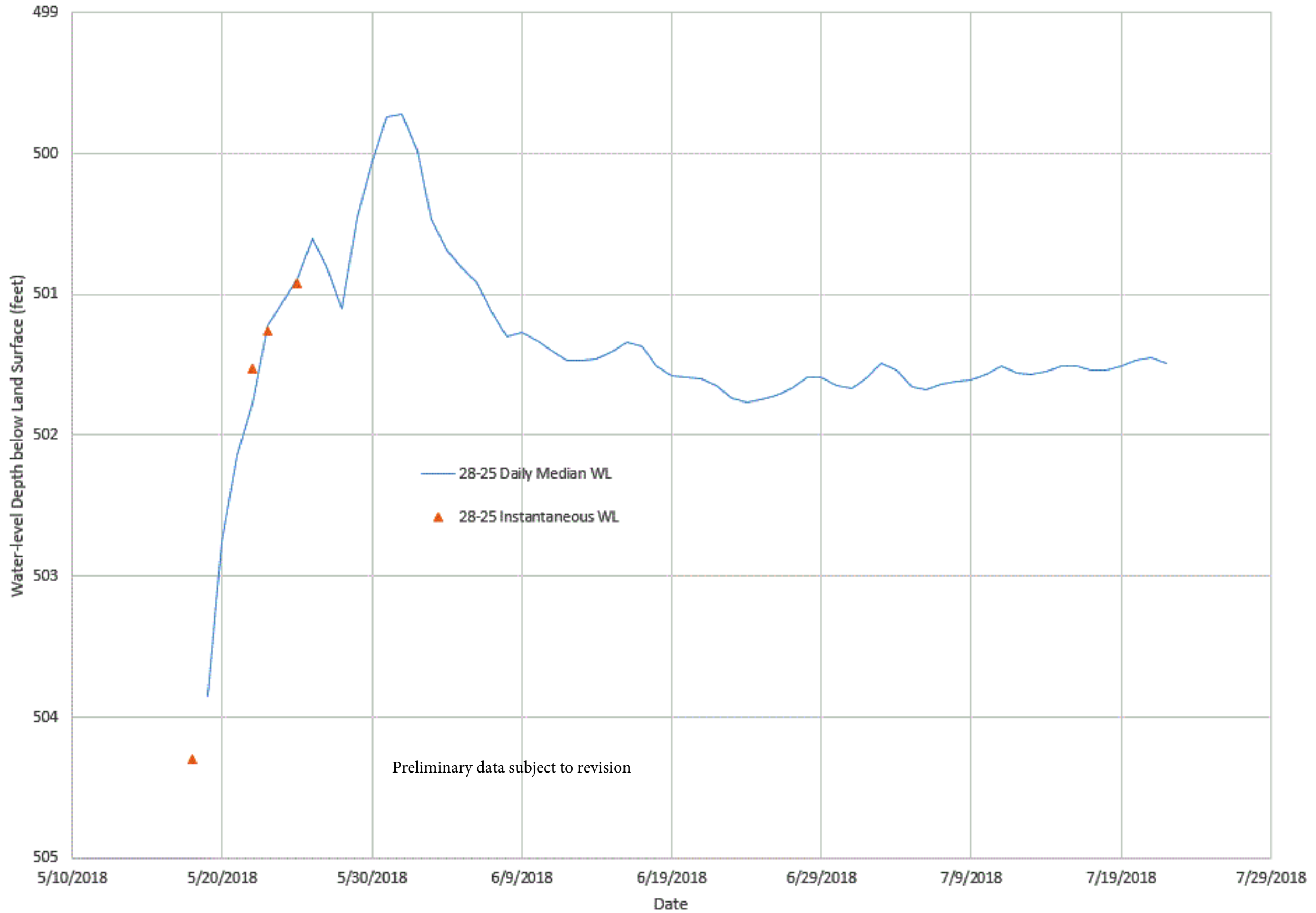
Well 28A-25 - Daily Median and Instantaneous Water-level Depth below Land Surface



Well BLM-1 Water level Depth below Land Surface



Well 28-25 - Daily Median Water-level Depth below Land Surface

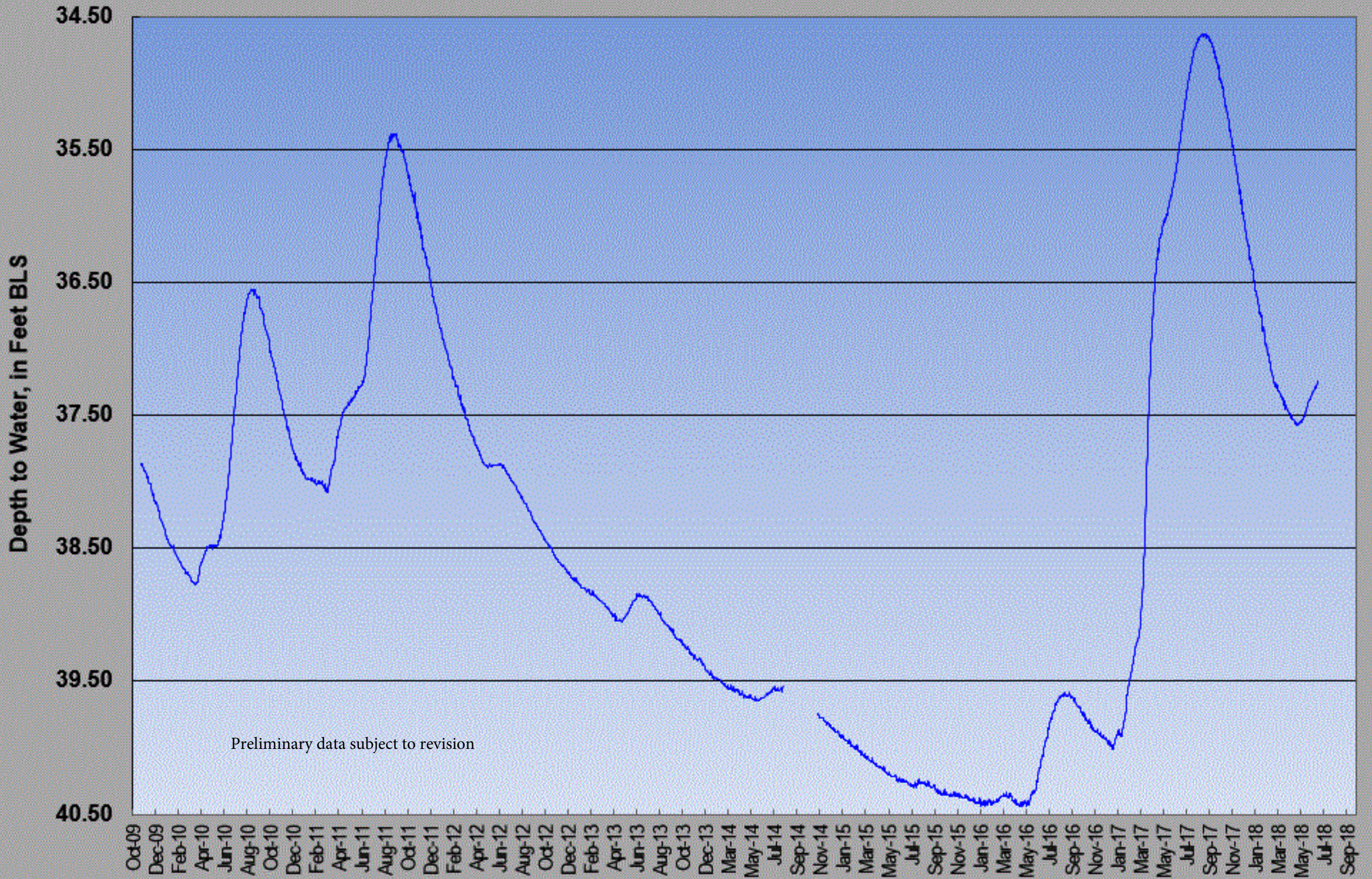


Well CH-10B



Well LV-19 near Doe Ridge

Daily Values



Wells SC-1 and SC2 Daily Values

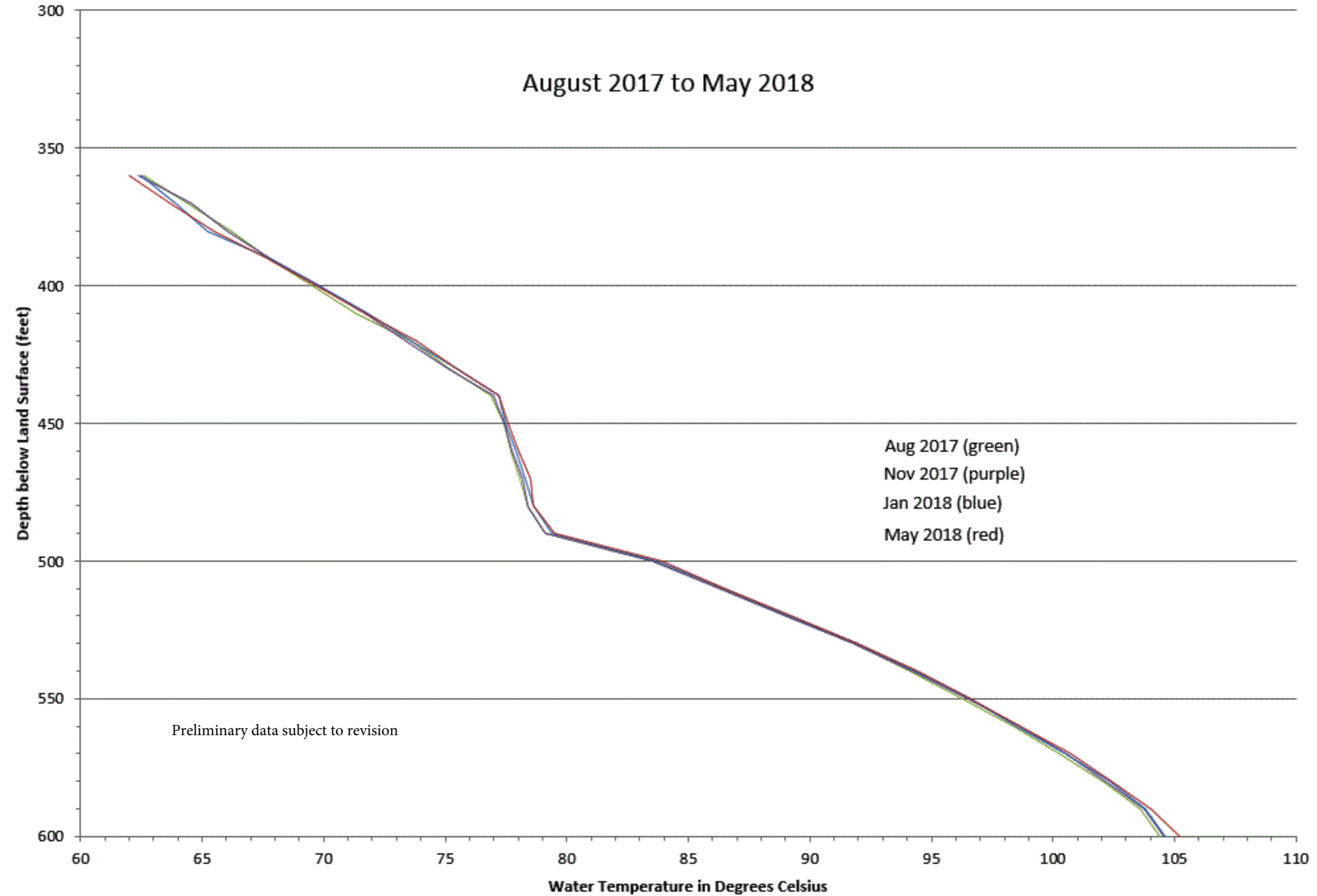


Wells SC-1 and SC2 Daily Values



14A-25_1 Temperature Profiles

August 2017 to May 2018



28A-25_1 Temperature Profiles

May 2017 to May 2018

May, 2017 (green)

Nov, 2017 (purple)

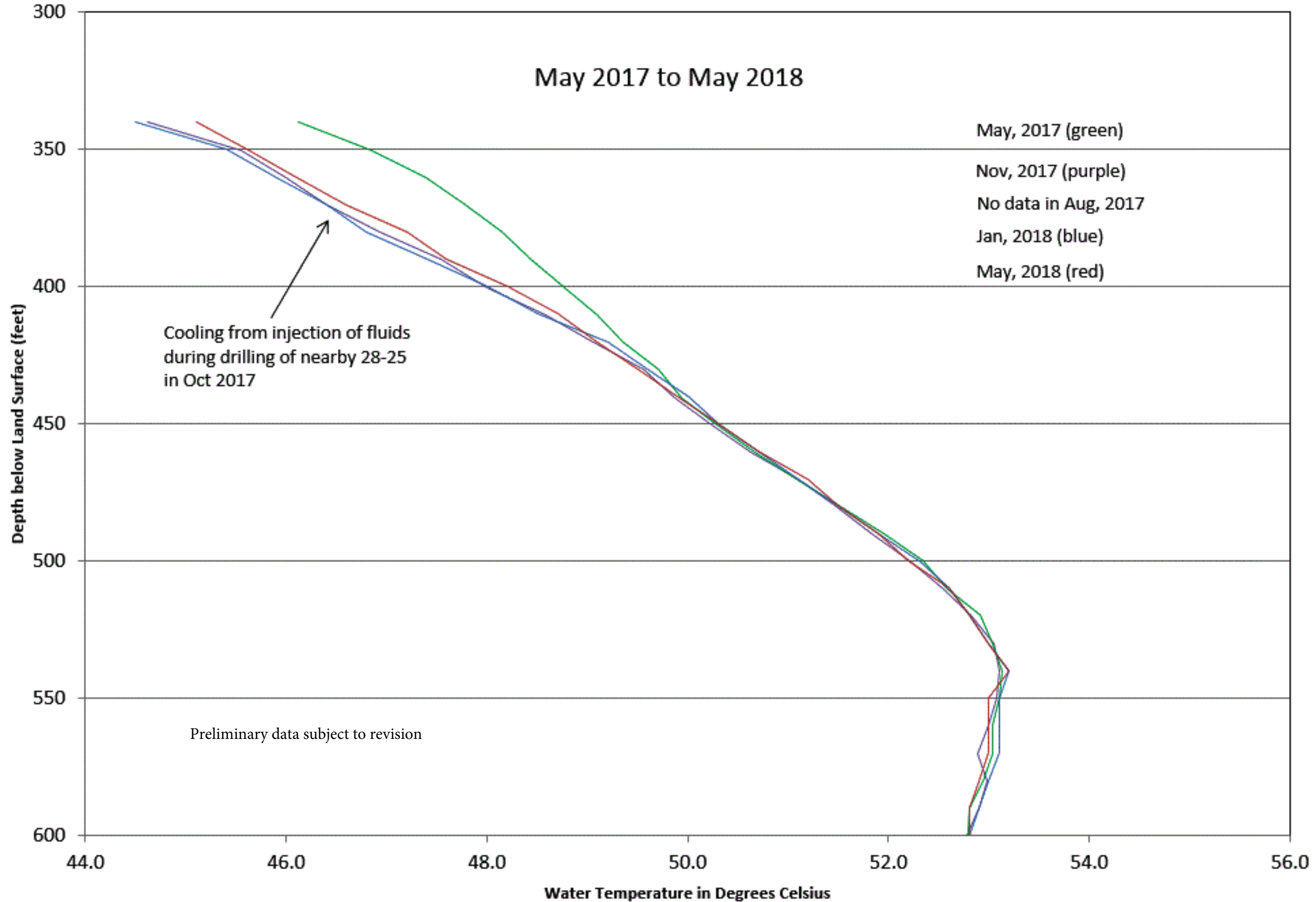
No data in Aug, 2017

Jan, 2018 (blue)

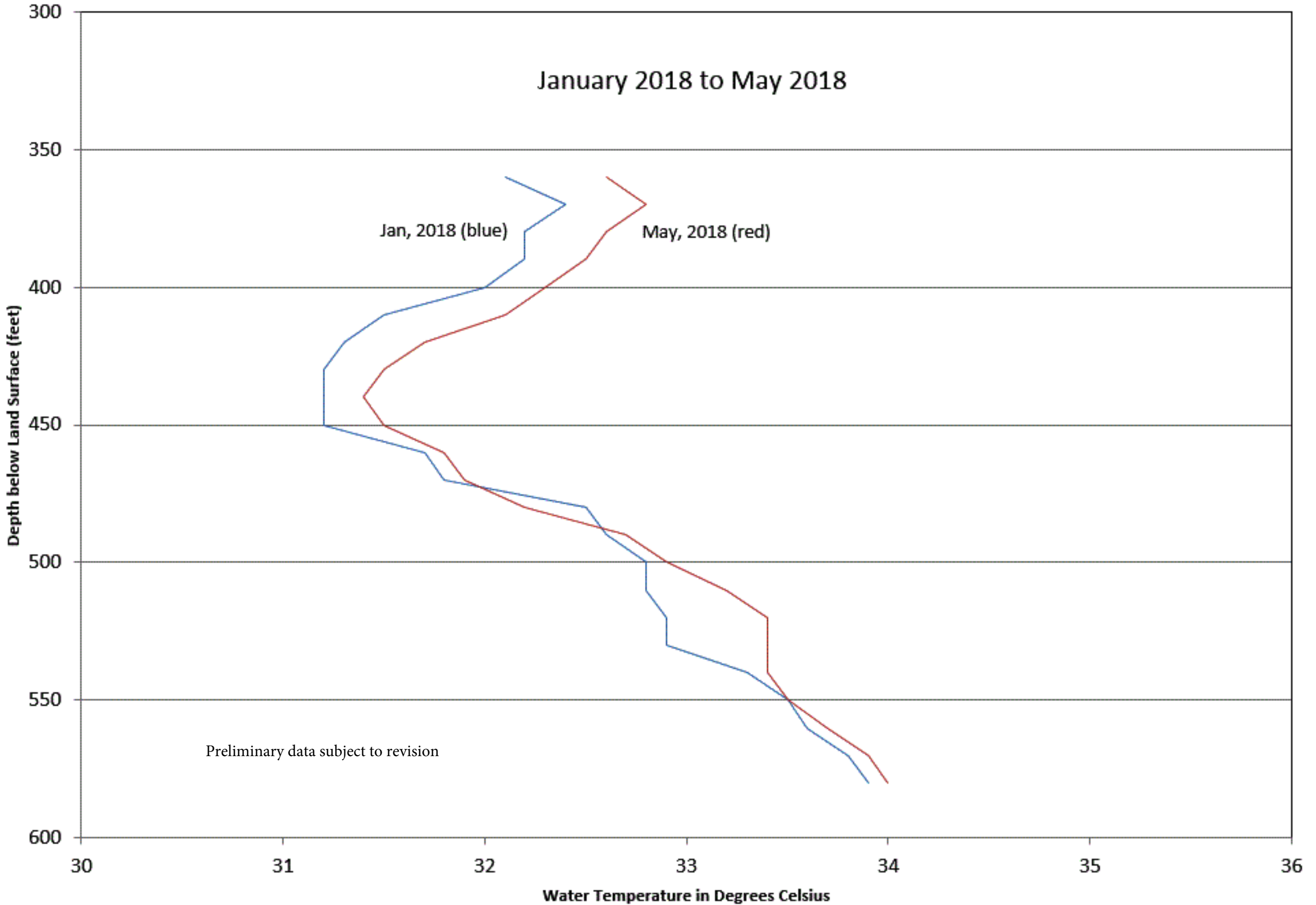
May, 2018 (red)

Cooling from injection of fluids during drilling of nearby 28-25 in Oct 2017

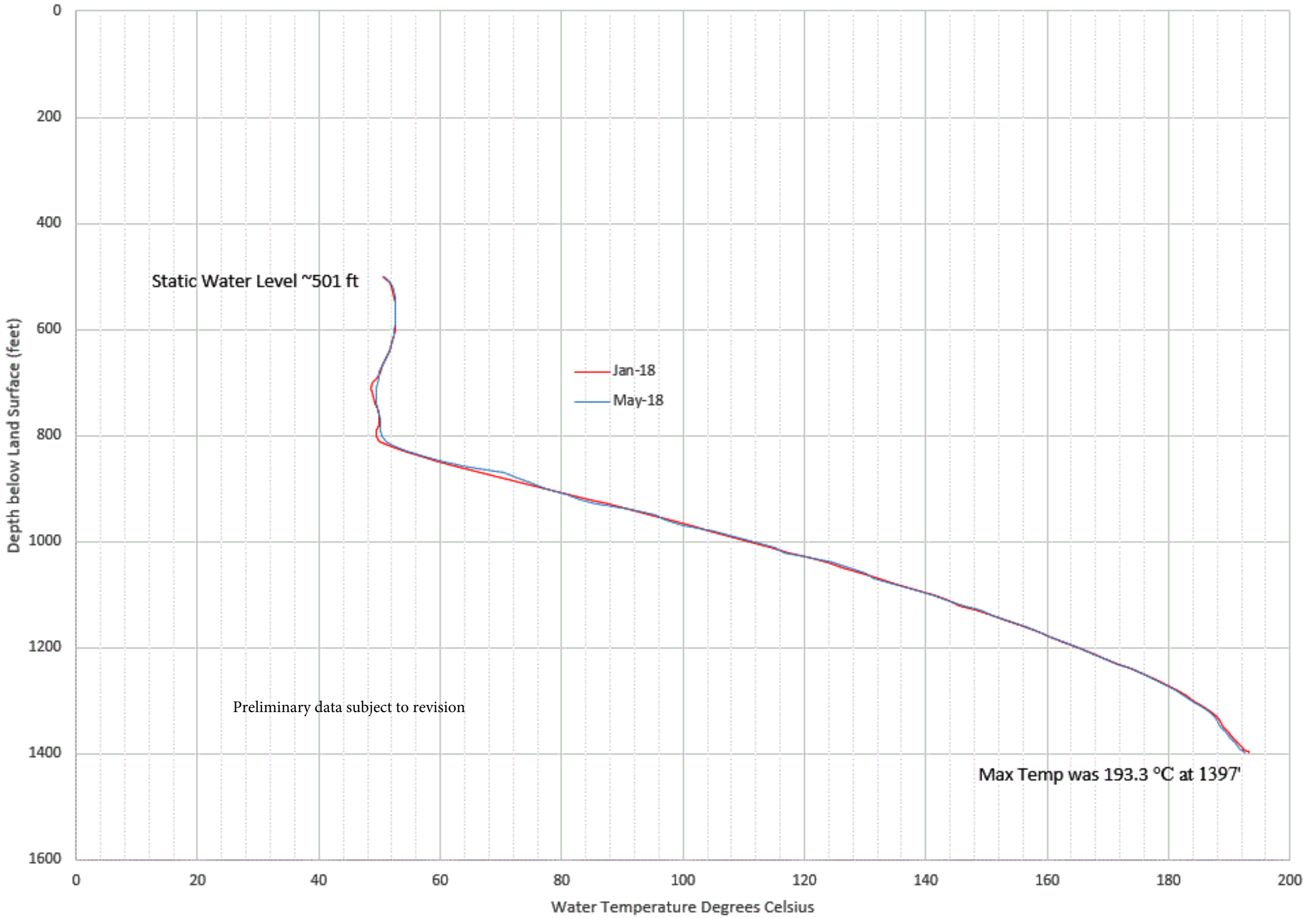
Preliminary data subject to revision



BLM-1_1 Temperature Profiles



28-25 Temperature Logs



Static Water Level ~501 ft

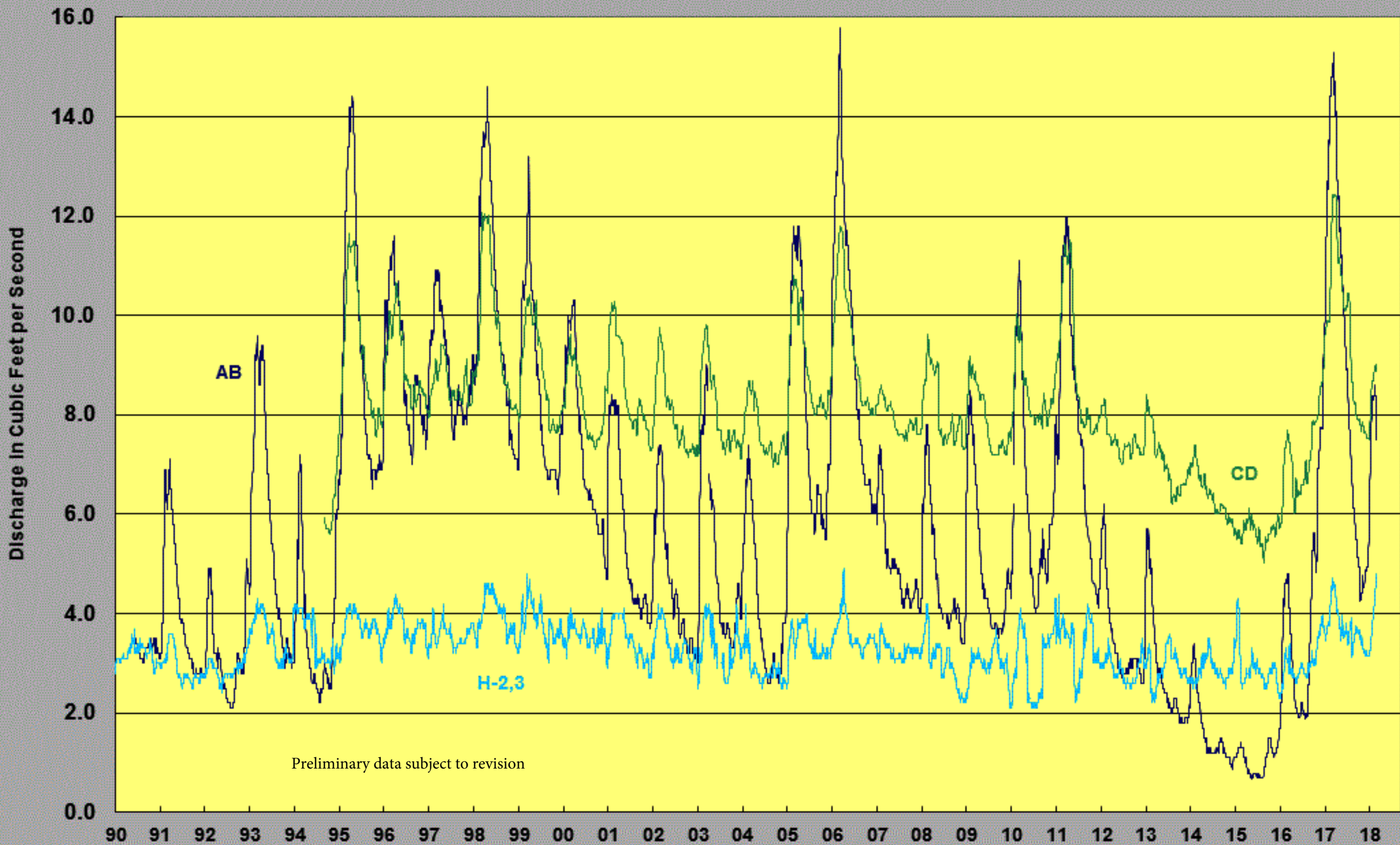
Jan-18
May-18

Preliminary data subject to revision

Max Temp was 193.3 °C at 1397'

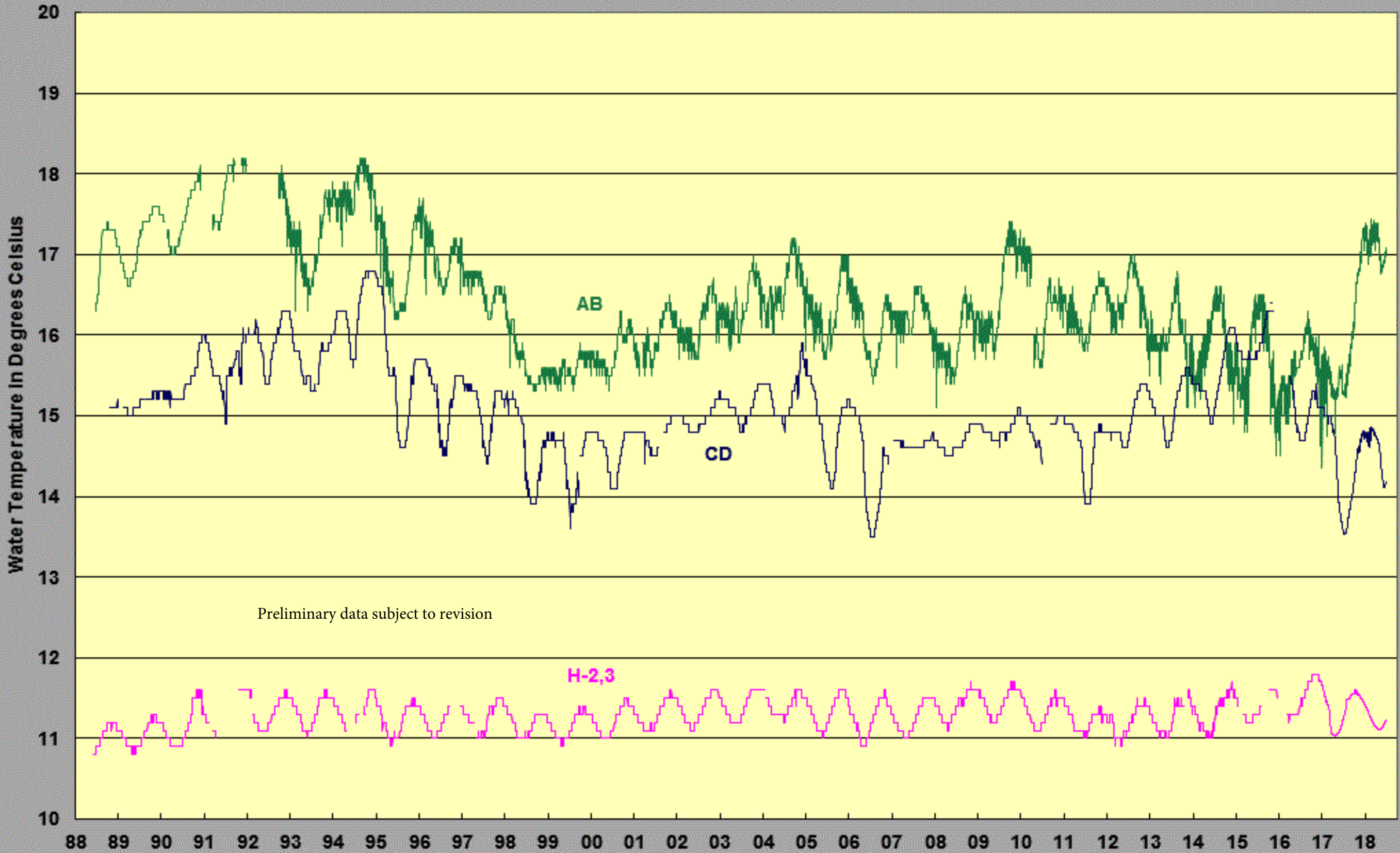
Fish Hatchery Springs Discharge

Daily Mean Flows

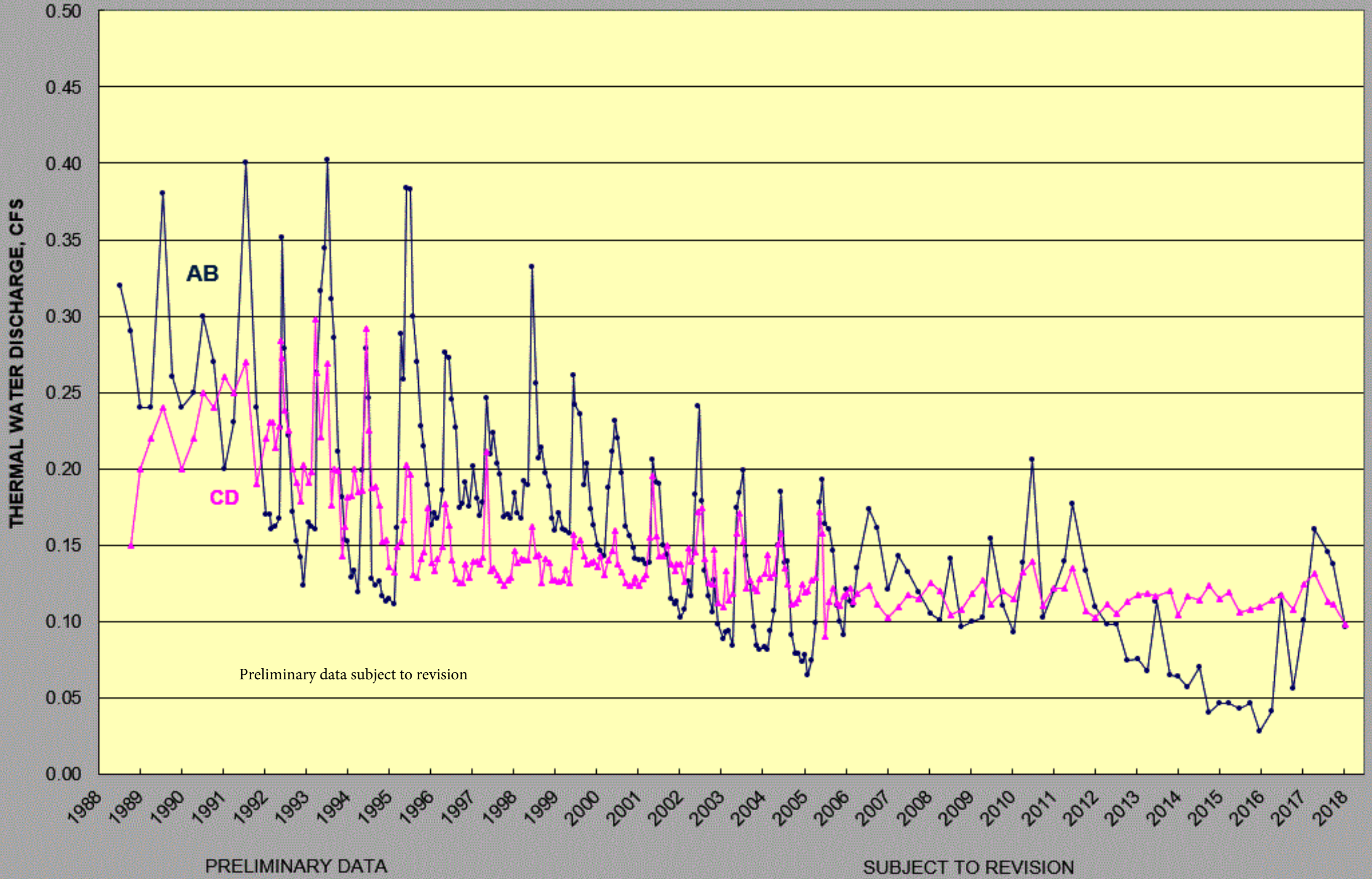


Fish Hatchery Springs Water Temperatures

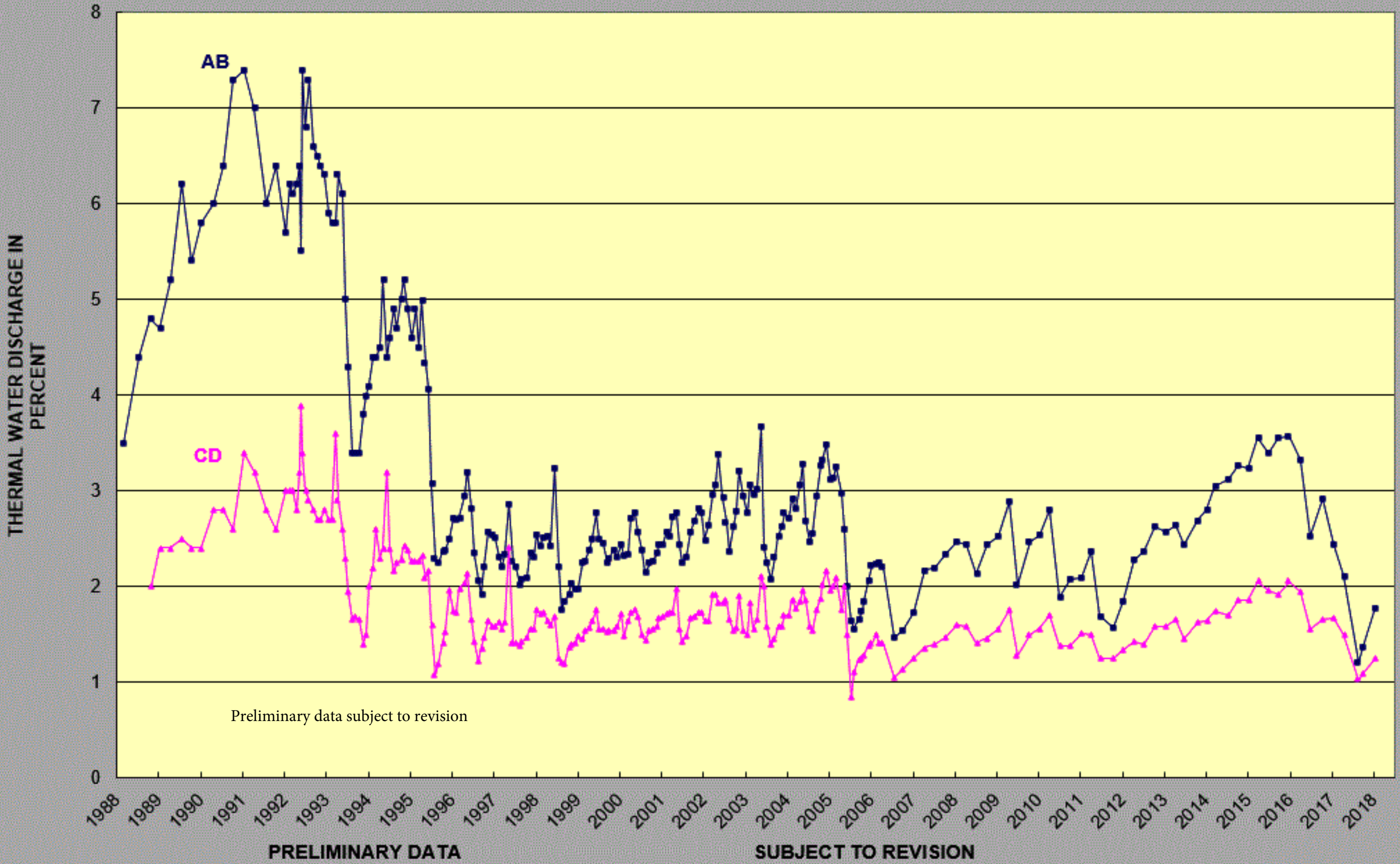
Daily Mean Temperatures



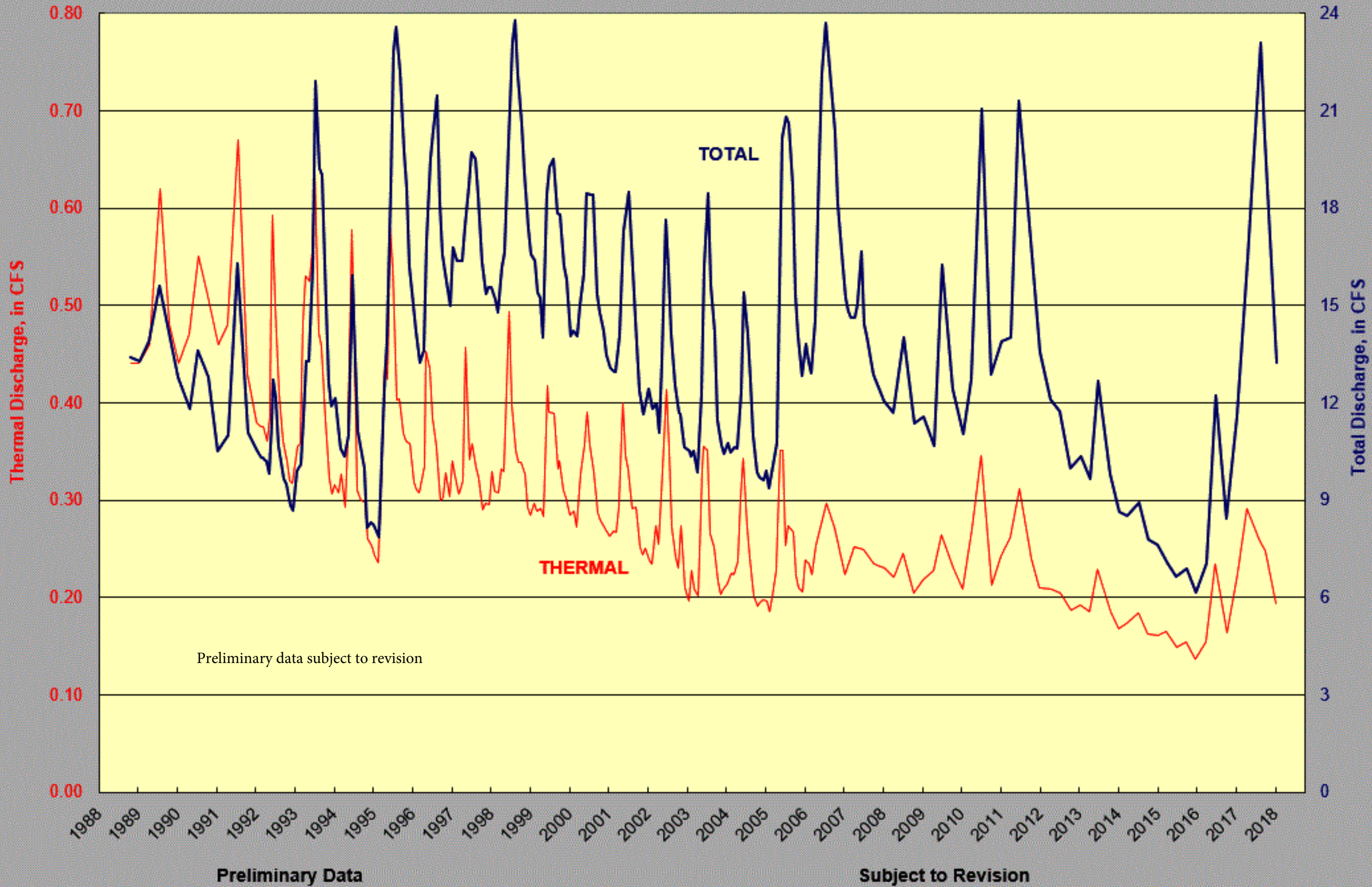
FISH HATCHERY SPRINGS AB and CD



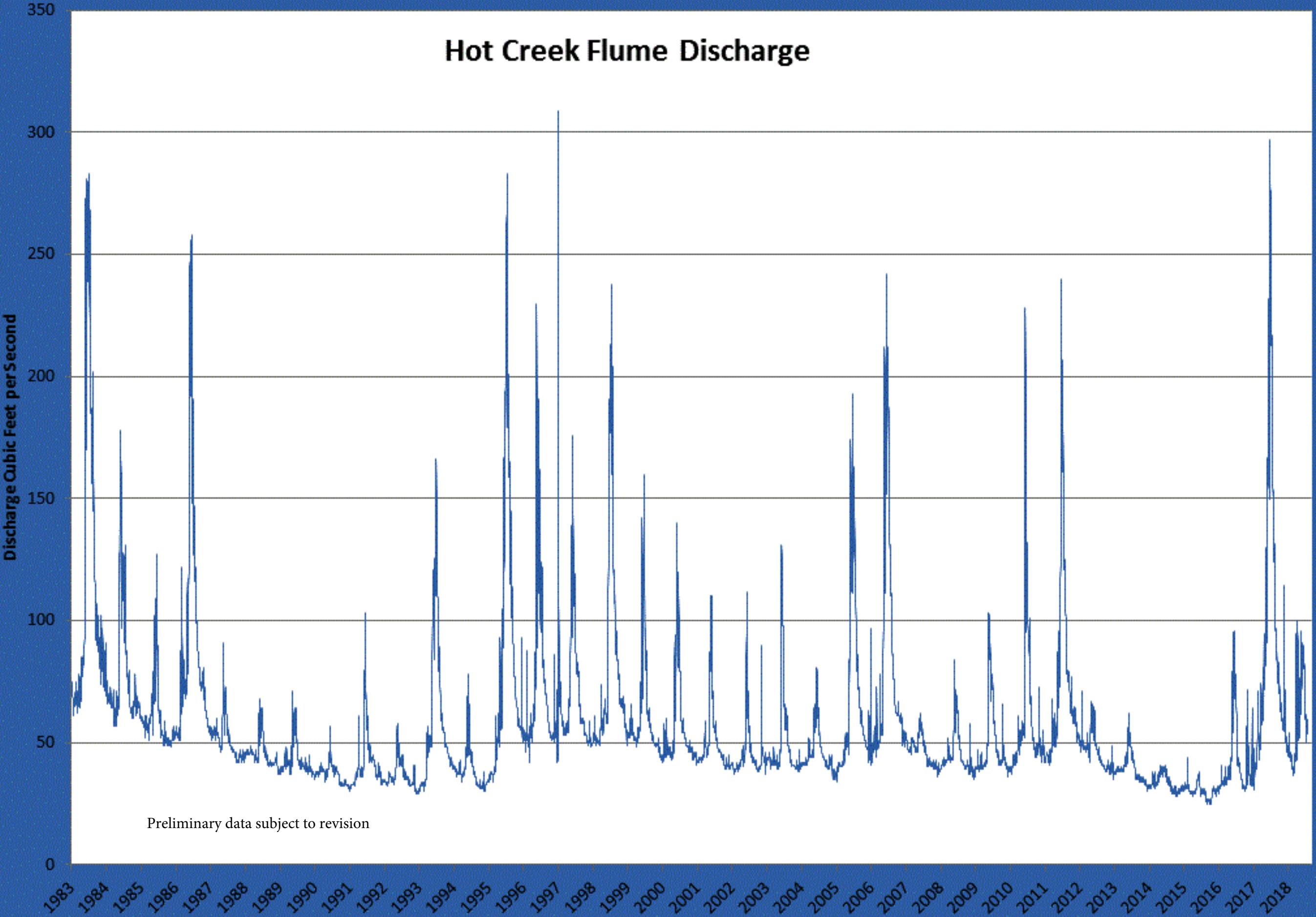
FISH HATCHERY SPRINGS AB and CD



FISH HATCHERY SPRINGS AB plus CD

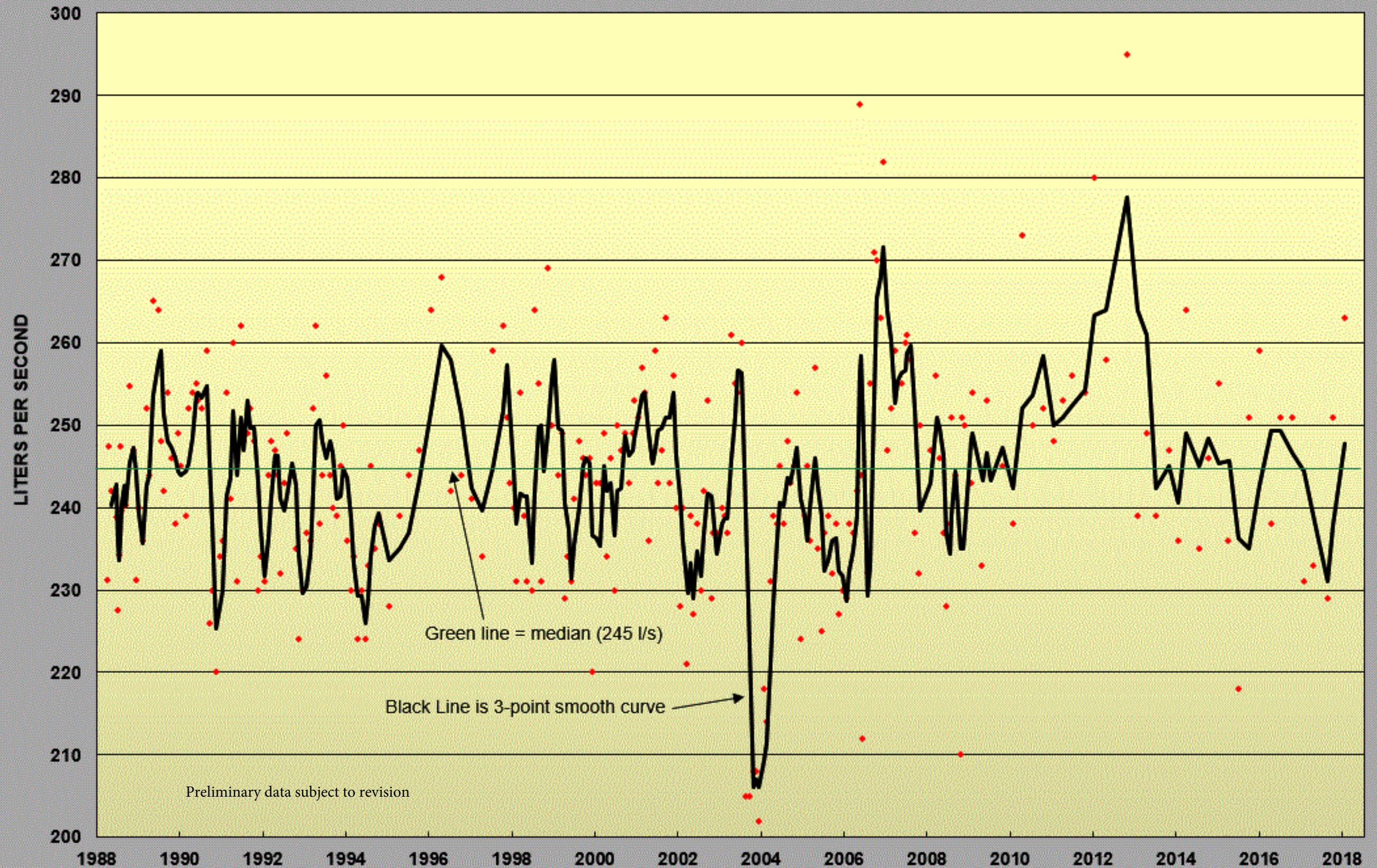


Hot Creek Flume Discharge

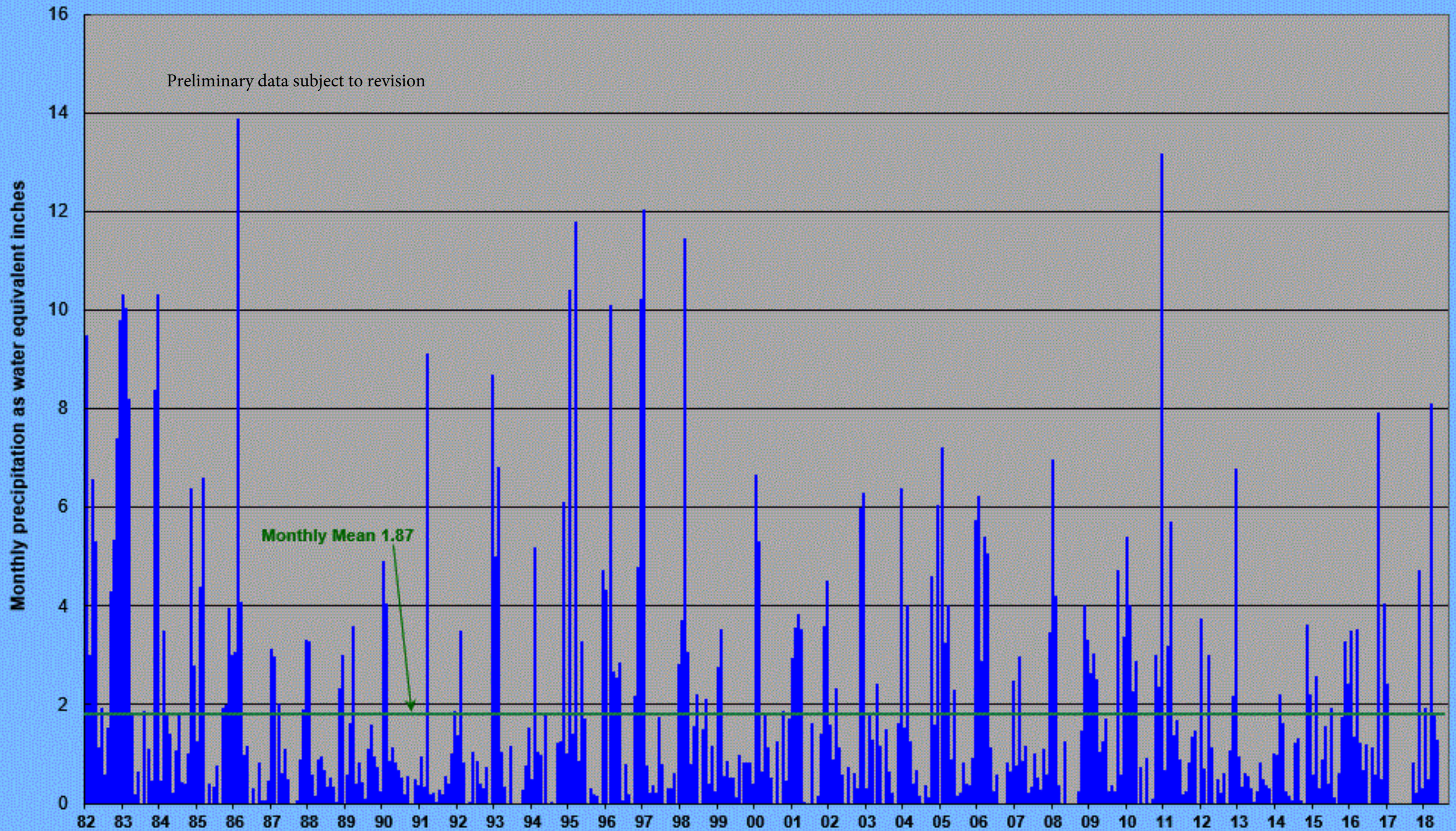


Preliminary data subject to revision

HOT CREEK GORGE THERMAL SPRING DISCHARGE



Precipitation at Mammoth Lakes, CA



Data from U.S. Forest Service

Site Name	USGS Site ID	Site Type	Data Types
14A-25_01 (deep)	373927118571701	Ground water	WL, QW, VTP
14A-25_02 (shallow)	373927118571702	Ground water	WL, QW
28A-25_01 (deep)	373904118570701	Ground water	WL, QW, VTP
28A-25_02 (shallow)	373904118570702	Ground water	WL, QW
BLM-1_01 (deep)	373845118574201	Ground water	WL, QW, VTP
BLM-1_02 (shallow)	373845118574202	Ground water	WL, QW
28-25	373905118570701	Ground water	WL, QW, VTP
CH10-B	373930118491602	Ground water	WL
SC-1	373745118554001	Ground water	WL
SC-2	373745118554002	Ground water	WL
LV-19	373754118501701	Ground water	WL
FHAB	373822118514401	Spring	Q, WT, TQ
FHCD-Q	373818118513301	Spring	Q, WT, TQ
FHCD-T	373817118514101	Spring	Q, WT, TQ
FH23-Q	373829118505801	Spring	Q
FH23-T	373829118505801	Spring	WT
HCA	10265147	Surface water	Q, TQ
HCF	10265150	Surface water	Q, TQ

Table of sites monitored by the USGS and presented in the bi-annual LVHAC data report, USGS site ID, site type and data type. Data types: WL – water level; QW – water quality (chemistry); VTP – vertical temperature profile; Q – discharge; WT – water temperature, TQ – thermal water discharge.