



Jobseeker News

A MONTHLY NEWSLETTER FOR MONO COUNTY JOBSEEKERS AND EMPLOYERS

CONTACT US

Mammoth Lakes
1290 Tavern Road
PO BOX 2969
Mammoth Lakes, CA
760-924-1770

Bridgeport
37 Emigrant St.
Bridgeport, CA
760-932-5600

Walker
107384 HWY 395
Walker, CA
530-495-1263

www.monocounty.ca.gov

Employment Service Workers

Angela Olson
aolson@mono.ca.gov

Cynthia Garibay
cgaribay@mono.ca.gov

Yvon Guzman-Rangel
yguzman-rangel@mono.ca.gov

A PROUD PARTNER OF
America's JobCenter
of California™

RECENT NEWS

Keep Your Assets and Still Qualify for Medi-Cal

Beginning July 1, 2022, a new law in California will increase the asset limit for Non-Modified Adjusted Gross Income (Non-MAGI) Medi-Cal programs. Non-MAGI programs generally provide health care for seniors, people with disabilities, and individuals who are in nursing facilities, as well as some other specialty groups. The increased asset limits will allow a larger number of applicants to become eligible for Medi-Cal benefits, and will allow qualified beneficiaries to retain a larger amount of non-exempt assets and still be eligible for Medi-Cal. All other Non-MAGI Medi-Cal rules regarding the treatment of assets will still apply, such as exemptions for your home and vehicle.

The new limits will be as follows:

Household Asset Limits for Non-MAGI Programs as of July 1, 2022	
Household size	Asset limits
1 person	\$130,000
2 people	\$195,000
3 people	\$260,000
4 people	\$325,000

Keep your assets and still qualify for Medi-Cal.

DHCS

Contact your local county office today.

Conserve sus activos y siga siendo elegible para Medi-Cal.

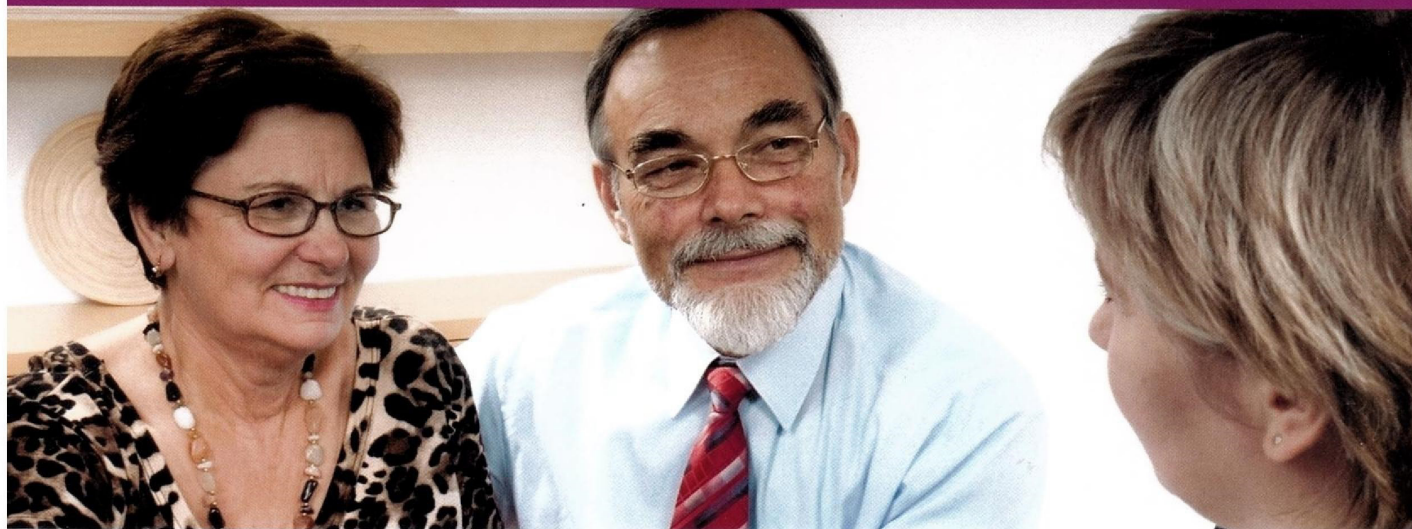
Comuníquese hoy con la oficina local de su condado.

DHCS

Please call us at 760-924-1770 or visit this website for future FAQs, notices, resources, and additional information: www.dhcs.ca.gov/services/medi-cal/eligibility/Pages/AssetLimitChanges-for-Non-MAGI-Medi-Cal.aspx

Health Insurance Counseling & Advocacy Program (HICAP)

FREE Unbiased Medicare Counseling



Who We Are

The Council on Aging – Southern California has been a trusted nonprofit since 1973. We provide unbiased information, programs and services to more than 275,000 adults and families annually.

The Council on Aging's HICAP counselors are California state-registered staff and volunteers, offering individualized counseling and group seminars about Medicare and other related health insurance topics.

HICAP is part of the national network of State Health Insurance Assistance Programs (SHIP) and is the most dependable source of unbiased and accurate Medicare related information.

CALL US — WE CAN HELP

Call us to make an appointment at:

The Bishop Senior Center
682 Spruce Street, Bishop, CA 93514



(760) 267-1191



www.coasc.org

What We Do

HICAP offers personalized one-on-one counseling to assist beneficiaries in understanding their Medicare benefits and choosing options best-suited for their needs.

HICAP Counselors Can:

- ▶ Compare and evaluate insurance plans
- ▶ Assist when problems occur
- ▶ Assist with cost-saving options

HICAP Counselors Explain:

- ▶ Medicare benefits and enrollment
- ▶ Medicare Advantage Plans (Part C)
- ▶ Prescription Drug Plans (Part D)
- ▶ Medigap Plans (supplemental policies)
- ▶ Long-term care services and support
- ▶ Low income assistance programs



HICAP

a Program of Council on Aging

JOBS OF THE MONTH

Mammoth Lakes Housing: Housing Navigator

Location: Mammoth Lakes

Salary: \$45,000-\$52,000

Info: Mammoth Lakes Housing, Inc. (MLH), a nonprofit public benefit housing corporation, is accepting applications for a Housing Navigator. Experienced office professional needed to provide client intake, service referrals, manage databases, provide excellent customer service, and assist the MLH team with the implementation of housing programs and projects, including homelessness prevention. The ideal candidate will be committed to affordable housing and social justice issues.

Qualifications: Associate of Arts Degree (AA) in related field such as Social Services or Community Development and/or a recommended one year of similar experience. Fluency in Spanish, both verbal and written, is preferred. \$250/month language skills stipend for those who can demonstrate competency through a skills test. Computer proficiency required - including word processing, data entry, and spreadsheets. Must have valid driver's license, a good driving record, and be insurable on company policy. Must have excellent communication skills, both written and verbal, with ability to engage persons who are in distress without judgment; and possess strong organizational skills with the ability to prioritize and perform multiple tasks. Capable of travel to all sites within Mono County and Alpine County.

Position Closes: Open until filled.

More Information and To Apply:

Applicants should complete the application and upload a letter of interest. If you have questions about the position, please contact: Patricia Robertson at 760-934-4740 or patricia@mammothlakeshousing.org.

mammothlakeshousing.org/now-hiring-housing-navigator-positions



Bluesapalooza: Paid Event Staff

Location: Mammoth Lakes

Salary: \$15/hour

Info: Join the biggest event in Mammoth! Requires energetic, customer service attitude and the ability to be on your feet during shifts. Some manual labor required. Roles include event set up, check-in, customer relations, retail, grounds and maintenance, and many other roles.

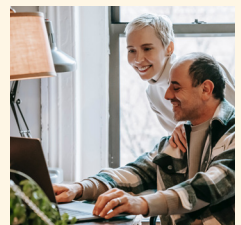
To Apply:

mammothbluesbrewsfest.com/staff-application



SUBSCRIBE TO THE JOBSEEKER EMAIL NEWSLETTER!

Never miss an update! Sign up for our monthly Jobseeker News e-newsletter to receive up-to-date information straight to your phone or computer. Visit our Mailchimp signup form at eepurl.com/hGEkAz or scan the QR code to subscribe.



JOB BOARD POSTINGS

East Side Bake Shop:

Front of House, Kitchen, Bakery
Crowley Lake

Info: Reopening for Summer 2022!
To Apply: Call/text 760-914-2696
or email: eastsidebakeshop@gmail.com.

Alpine Approach:

Sales Assistants
Mammoth Lakes

Salary: Dependent on experience.
Info: Seeking team members.
Mammoth Mountaineering Supply
and Alpine Approach. Ski pass
included.
To Apply: Inquiries/resumes to
Dave@MammothGear.com,
Jobs@MammothGear.com

Mammoth Mountain:

Various Positions
Mammoth Lakes

Info: Mammoth offers exciting
options for job seekers looking for
a rewarding work experience in
the ski resort and hospitality.
To Apply: [secure3.
saashr.com/ta/6027032.
careers?CareersSearch](https://secure3.saashr.com/ta/6027032.careers?CareersSearch)

UPS:

Preload Supervisor (PT)
Bishop

Info: Train and supervise daily
activities of package handlers and
clerks to ensure that all assigned
duties are accomplished.
To Apply: [jobs-ups.com/
job/bishop/part-time-
preload-supervisor-
bishop/1187/30248906672](https://jobs-ups.com/job/bishop/part-time-preload-supervisor-bishop/1187/30248906672)

June Lake Public Utility: District

Operational Worker (PT)
June Lake

Salary: \$22/hour
Info: 30 hrs per week, for 6
months. After 6 months you
may be considered for a full time
year round position. Learn to
perform day to day operations and
maintenance tasks necessary for
the reliable and efficient operation
of the district's water delivery and
wastewater disposal system.
To Apply: JuneLakePUD.com

State of California:

Agricultural Technician III
Plant Quarantine Inspector
Mono County

Info: The State of California offers
a wide variety of careers and
jobs, ranging from accounting to
zoology.
To Apply: [calcareers.ca.gov/
CalHRPublic/Landing/
StateEmployees.aspx](http://calcareers.ca.gov/CalHRPublic/Landing/StateEmployees.aspx)

Mono County Social Services: Integrated Case Worker I and II Mammoth Lakes

Salary: \$4,209-\$5,116/month
\$4,646-\$5,647/month
Info: Applies regulations and
procedures to determine
eligibility of applicants and
recipients for multiple public
assistance benefits; provides basic
employment services to clients;
performs casework management
duties for both benefit and
employment services.
To Apply: [www.governmentjobs.
com/careers/MSS/jobs/3554528/
integrated-case-worker-i](http://www.governmentjobs.com/careers/MSS/jobs/3554528/integrated-case-worker-i)

[www.governmentjobs.com/
careers/MSS/jobs/3554548/
integrated-case-worker-ii](http://www.governmentjobs.com/careers/MSS/jobs/3554548/integrated-case-worker-ii)

Blizzard Property Mgmt: Administration Mammoth Lakes

Salary: Dependent on experience.
Info: Answer the phone, take
maintenance requests, process
rental applications, and more.
Need to be fluent in English and
Spanish. M-F 9-3.
To Apply: jerrica@blizzardpm.com
or call 760-934- 4455 ext. 01

California State Parks: State Park Equipment Operator Various California Locations

Salary: \$5,094-\$5,864/month
Info: From developing new
recreation areas to restoring our
parks, and keeping our state parks
operational for all to enjoy.
To Apply: [parks.ca.gov/
PAGES/736/FILES/2PR05.PDF](http://parks.ca.gov/PAGES/736/FILES/2PR05.PDF)

Mono County Superior Court: Court Operations Manager Mammoth Lakes

Salary: \$7,301-\$9,783/month
Info: Responsible for the
management of the day-to-day
operations of the court.
To Apply: [mono.courts.ca.gov/
general-information/employment](http://mono.courts.ca.gov/general-information/employment)

Alpenhof Lodge: Night Audit/Front Desk. FT/PT Mammoth Lakes

Info: Year-round, work weekends
and holidays. Housing option may
be available.
To Apply: 6080 Minaret Road

More Jobs: [www.monocounty.
ca.gov/workforce-services/page/
job-boards-links](http://www.monocounty.ca.gov/workforce-services/page/job-boards-links)

RECENT NEWS

Mexican Consulate Mobile Services a Big Success! ¡Los Servicios Móviles del Consulado Mexicano un Gran Éxito!

On May 9-12, 2022, the Mexican Consulate provided services to the communities of Inyo County and Mono County. The purpose of this event was to issue valid Mexican government documents to individuals who had no other form of identity or whose documents had expired.

The Mexican Consulate booked 270 appointments and were able to process 379 documents.

Below are some of the first-hand accounts on how this event impacted our families:

“I’m on Medi-Cal and haven’t been able to get my eye surgery because I don’t have a valid government ID. Now I will be able to get eye surgery.” – **Graciela**

“I wanted to get my driver’s license but haven’t been able to get it because I can’t prove my identity. Getting the Matrícula Consular will allow me to finally get my driver’s license!” – **Letty**

“I have diabetes, and I have a lesion on my leg which has not healed. I came all three days to process different documents, having this event locally allowed me to focus on my healing without the need to travel.” – **Ricardo**



Photo: Zen Chung

“I can’t cash out my checks or open a bank account because I don’t have a valid ID. Getting the Matrícula Consular will allow me to be financially independent.” – **unknown**

Having events such as these are the gateway for our community to access other services such as self-independence, surgeries, and financial stability.

Thank you to all those who supported this effort and donated their time to bringing the Mexican Consulate to Inyo and Mono County. Please continue to subscribe to our newsletter (eepurl.com/hGEkAz) to learn about further upcoming events in coordination with the Mexican Consulate.



Haz tu cita en mexitel.sre.gov.mx o llama al 1-877-639-4835

Para ingresar a la página de citas, coloca la cámara de tu celular sobre la imagen. Las citas se abren el miércoles antes de cada visita.



[f](#) [t](#) [i](#) [v](#) [@consulmexfresno](#)



Mono County Senior Services

SENIOR ICE CREAM SOCIAL

Representatives from
Mono County
Public Health: Tobacco
Education Program,
Emergency Preparedness
COVID Education and
Immunizations
Social Services:
Medi-Cal and CalFresh

HICAP- Specialist for
Medicare Counseling
and Advocacy

July 21st

5pm - 6pm

Chalfant Community Center

123 Valley Rd.





Chalfant

Contact ~ Victoria Mora (760) 914-7239

vmora@mono.ca.gov

Keep Your Medi-Cal: Make Sure We Have Your Current Contact Information

Don't miss important information about your Medi-Cal health coverage. Please contact us (details in green box on cover) to ensure we have your current contact information: **name, address, phone, and email.**

 Name	 Phone
 Address	 E-mail

Report any changes to your contact information

Beneficiarios de Medi-Cal

Mantenga su información de contacto (teléfono, dirección, o correo electrónico) actualizada para recibir información importante sobre su cobertura Medi-Cal.

Comuníquese con su trabajador(a) Medi-Cal de elegibilidad del condado hoy.



FREE Golden Bear Pass

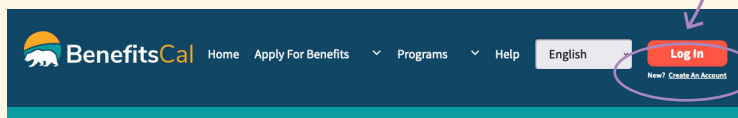
Did you know that any qualifying person receiving Supplemental Security Income (SSI), any person receiving aid under the CalWORKS Program, or any person 62 years of age or older with income limitations is eligible to receive a free Golden Bear Pass?

The pass provides **FREE day-use entry at 200+ state parks and beaches.** The passes are valid from January 1, 2022 to December 31, 2022.



Photo: California State Parks/Del Norte Coast Redwoods State Park, Crescent City

Did you know? You can complete your annual renewal and report changes to your Medi-Cal online. Create your online account today by going to benefitscal.com and selecting the "Create An Account" link in the upper right corner, underneath the "Log In" button.

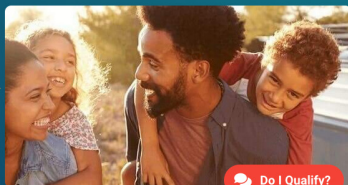


Important: Are you enrolled in Medi-Cal? Has your contact information changed in the past two years? Give your county office your updated contact information so you can stay enrolled. [Find your local county office.](#)

Welcome to BenefitsCal.

Here you can apply for Medi-Cal, CalFresh and CalWORKS.

Ready? Let's do this.



Do I Qualify?

California's state parks benefit the whole community. The parks are a fun and healthy way to connect with families, friends, and communities.

With 279 state parks, over 340 miles of coastline, 970 miles of lake and river frontage, 15,000 campsites, 5,200 miles of trails, 3,195 historic buildings and more than 11,000 known prehistoric and historic archaeological sites, the department contains the largest and most diverse recreational, natural and cultural heritage holdings of any state agency in the nation.



To sign up, use our secure form: www.surveymonkey.com/r/goldenbearpass or scan the QR code at the left. Once CDSS confirms your information and eligibility, California State Parks will print and mail your Golden Bear Pass to you!

Ready to start exploring? Find a California state park here: www.parks.ca.gov/ParkIndex



WORKFORCE SERVICES Let's Talk!

Please contact Workforce Services to discover more about the programs we provide. **We are here to help you succeed!**

Call us at 760-924-1770 or visit: www.monocounty.ca.gov/workforce-services



Photo: Brooke Cagle



Photo: Christin Hume



Photo: Jud Mackrill



Photo: Jakob Owens

CAREER SERVICES

Our Employment Service Workers are eager to assist and offer a variety of career related services.

- Résumé Building
- Interview Coaching
- Cover Letter Writing
- Career Counseling
- Job Search Assistance
- Community College Registration
- GED Training Referrals

RESOURCE ROOM

Do you need the use of a computer, internet, printer, copier, telephone or fax machine? We can help!

The Resource Room assistance is available to the public from 3pm to 5pm, Monday through Friday.

To receive assistance call 760-924-1770 and request employment services.

CALJOBS

Have you registered for CalJOBS?

CalJOBS is California's online resource to help job seekers and employers navigate the state's workforce services. You can search for jobs, create résumés, find qualified candidates, and more. Visit CalJOBS to register or log in.

www.caljobs.ca.gov

VETERANS SERVICES OFFICER

Gordon Greene
Office: 760-873-7850
Cell: 760-937-0431
ggreene@inyocounty.us

Please note that services offered through the Office of Veterans Affairs are for Veterans AND their families.

New Video Calling Services for the Hearing Impaired

Mono County Social Services has partnered with Sorenson to provide Video Relay Service (VRS) to hearing impaired individuals. Sorenson Relay calls are routed through an American Sign Language (ASL) video interpreting center.

Now Mono County residents who use ASL have the option to connect with hearing people over the videophone located at the Social Services office. Call us at 760-924-1770 or visit our office for more information about this new service.





Photo: Yan Krukov

UNEMPLOYMENT INSURANCE

Need Unemployment Insurance Assistance?

Public Statewide Online and Phone Unemployment Insurance (UI) Assistance:
edd.ca.gov/Unemployment/UI_Online.htm

- 1-800-300-5616 – UI Claims Support
- 1-833-978-2511 – General or Technical UI Support
- 1-866-333-4606 – Automated Self-Service UI Line

Public Local Kern, Inyo, and Mono (KIM) assistance with general UI guidance (from the Bakersfield AJCC/EDD Workforce Services (WS) staff in Bakersfield):

- 661-336-6912 – Bakersfield AJCC/EDD line
- WSBAJCCreferralKERN@edd.ca.gov – Bakersfield AJCC/EDD email



Photo: Los Muertos Crew

WORK INNOVATION AND OPPORTUNITY ACT

Updated Reimbursement of 50% of Wages to Employers

Are you an employer looking for help? The specific technical skills you need may be hard to find. The Workforce Innovation and Opportunity Act (WIOA) On-the-Job Training Program helps you train the right workers to meet your requirements.

This program assists employers with the costs of hiring and training new and advancing employees by offering financial reimbursement of up to 50% of the employee's wages during the training period.

This program is administered through Mono County Workforce Services. Contact: 760-924-1770 or workforceservices@mono.ca.gov before the employee is hired, or for any questions about the program.

LEGAL SERVICES

No-Cost Legal Services to Qualified Clients

California Indian Legal Services, Inyo-Mono Senior Legal Program and Eastern Sierra Legal Assistance Program.

Services Offered:

- Issues with Social Security, SSI and SSDI
- Power of Attorney and Advance Health Directives
- Housing Issues: Eviction, rent increase, habitability
- Federal Indian Law
- No-cost legal services to qualified clients

Please call and speak to one of our intake specialists.

Bishop Office:

873 N. Main St, Suite 130, Bishop CA 93514
 Phone 760-873-3581, Fax 760-873-7461

